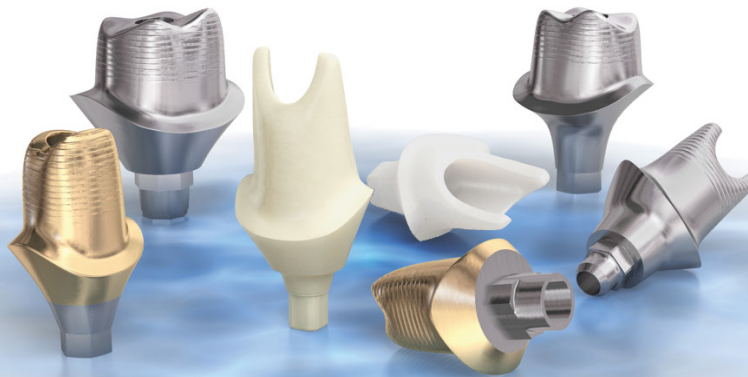


ABUTMENTS

Key Dental Aesthetics works with all FDA-approved implant manufacturers including, but not limited to, Atlantis, Zimmer Biomet, Straumann, Nobel Biocare, and Vulcan. We are also an Encode Empowered lab, which allows us to unlock Encode healing caps for abutment milling without using a third party.

- Custom abutment partners assume all warranties for OEM implants
- Options include: titanium, gold hue titanium, zirconia, hybrid zirconia, and one piece: screw-retained on a ti-base



Atlantis®
Provided by Dentsply Sirona Implants

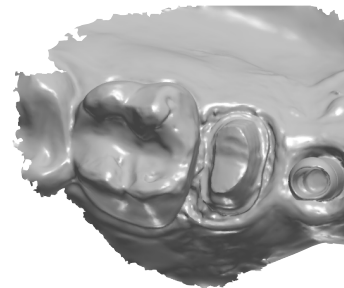


Left image courtesy of Dentsply Sirona, Inc.
Right image courtesy of Nobel Biocare

✓ FREE SCAN BODIES

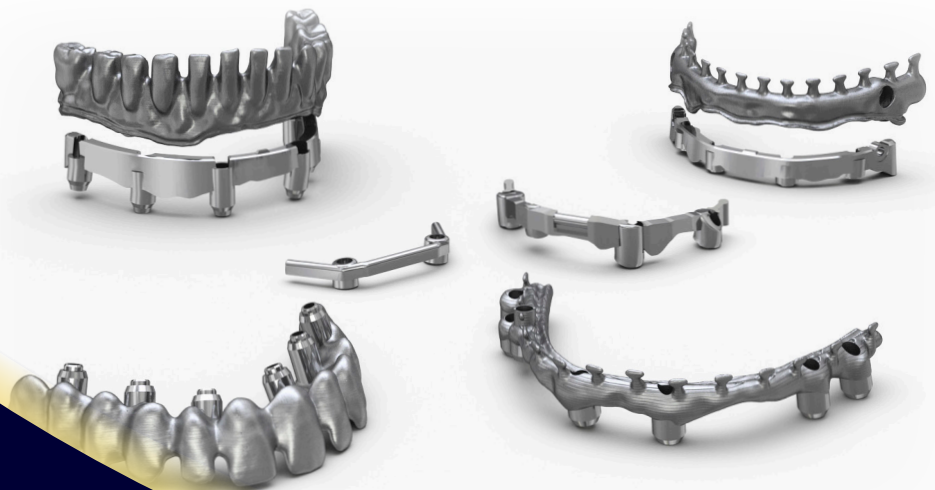
Key Dental Aesthetics has partnered with Atlantis and Nobel Biocare to provide free scan bodies for a wide selection of implant manufacturers. Scan bodies can be used on all digital platforms. Scan bodies create a seamless transfer of unique implant placement information to us for an unmatched custom abutment and aesthetic crown result.

Atlantis® Nobel Biocare™
Provided by Dentsply Sirona Implants



CUSTOM-MILLED BARS

Key Dental Aesthetics offers milled titanium or custom-cast bars for over dentures. We have partnered with Atlantis to offer a unique variety of options for cases that are more complex in nature. Custom bars can be paired with a semi-fixed or fixed prosthesis as dictated by your treatment plan. Custom-milled locator and Hader bars are also available. Call the lab for more information.



KEY DENTAL

AESTHETICS

5968 NC-16 Business Hwy | Maiden | NC | 28650
keydentalinc.com | 704.489.9978

Atlantis®
Provided by Dentsply Sirona Implants

©2025 KEY DENTAL AESTHETICS

DENTAL IMPLANT SURGICAL GUIDES

Surgical guides are easily adaptable to various clinical situations. The most common use of surgical guides is for single or multiple implants for fixed restorations. The teeth provide support, stability, and retention improving accuracy and precision when placing the implant.

- Improved accuracy and precision of implants
- Faster, simpler surgery
- Predictable restorative outcomes
- Guides the surgical instruments and implants to the proper location



READY TO SEND US YOUR SURGICAL GUIDES?

FOLLOW THESE EASY STEPS TO GET STARTED

- Provide Key Dental Aesthetics with the CBCT scan
- Provide scan or traditional impression of preparation arch
- Provide your desired implant brand system and size

If you have any questions or need help submitting your scans/impressions contact Trevor Gottfredson at 704.489.9978 or email trevor@keydentalinc.com



KEY DENTAL

AESTHETICS

5968 NC-16 Business Hwy | Maiden | NC | 28650
keydentalinc.com | 704.489.9978